

TIMELINE

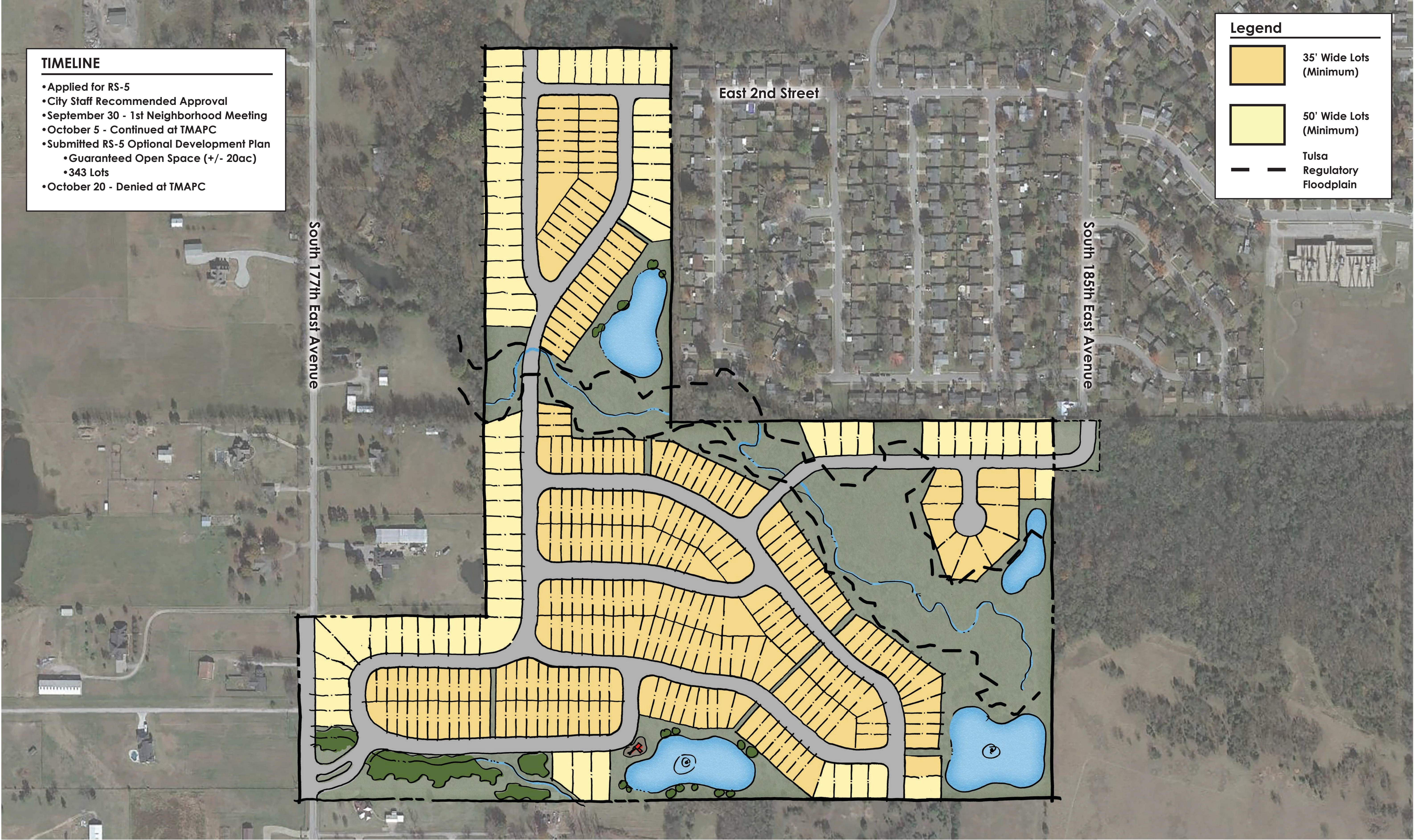
- Applied for RS-5
- City Staff Recommended Approval
- September 30 - 1st Neighborhood Meeting
- October 5 - Continued at TMAPC
- Submitted RS-5 Optional Development Plan
 - Guaranteed Open Space (+/- 20ac)
 - 343 Lots
- October 20 - Denied at TMAPC

Legend

35' Wide Lots
(Minimum)

50' Wide Lots
(Minimum)

Tulsa
Regulatory
Floodplain



Conceptual Masterplan 1

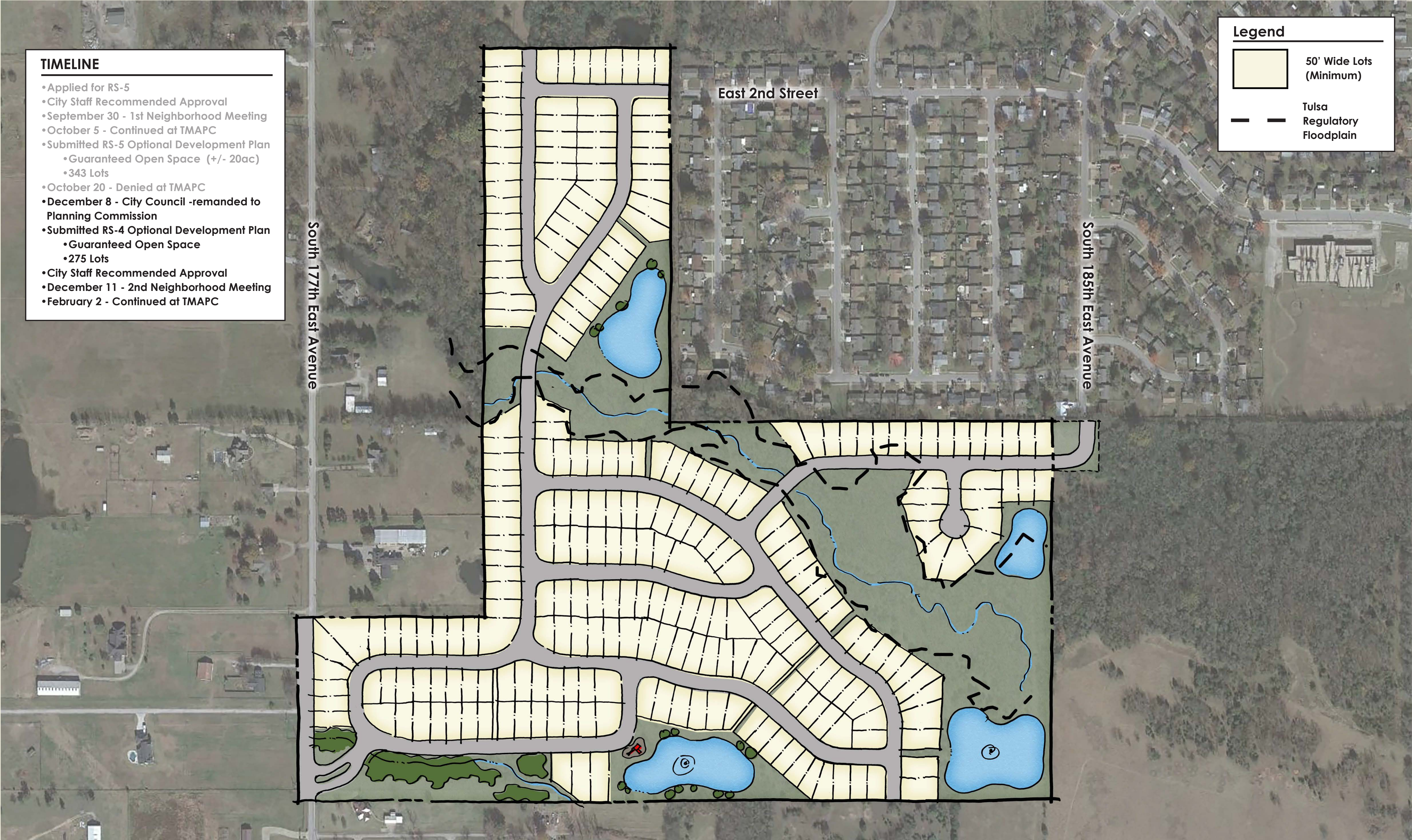
TIMELINE

- Applied for RS-5
- City Staff Recommended Approval
- September 30 - 1st Neighborhood Meeting
- October 5 - Continued at TMAPC
- Submitted RS-5 Optional Development Plan
 - Guaranteed Open Space (+/- 20ac)
 - 343 Lots
- October 20 - Denied at TMAPC
- December 8 - City Council -remanded to Planning Commission
- Submitted RS-4 Optional Development Plan
 - Guaranteed Open Space
 - 275 Lots
- City Staff Recommended Approval
- December 11 - 2nd Neighborhood Meeting
- February 2 - Continued at TMAPC

Legend

50' Wide Lots (Minimum)

Tulsa Regulatory Floodplain



Conceptual Masterplan 2

177th East Avenue & Admiral
3/1/22
Project 21150







TIMELINE

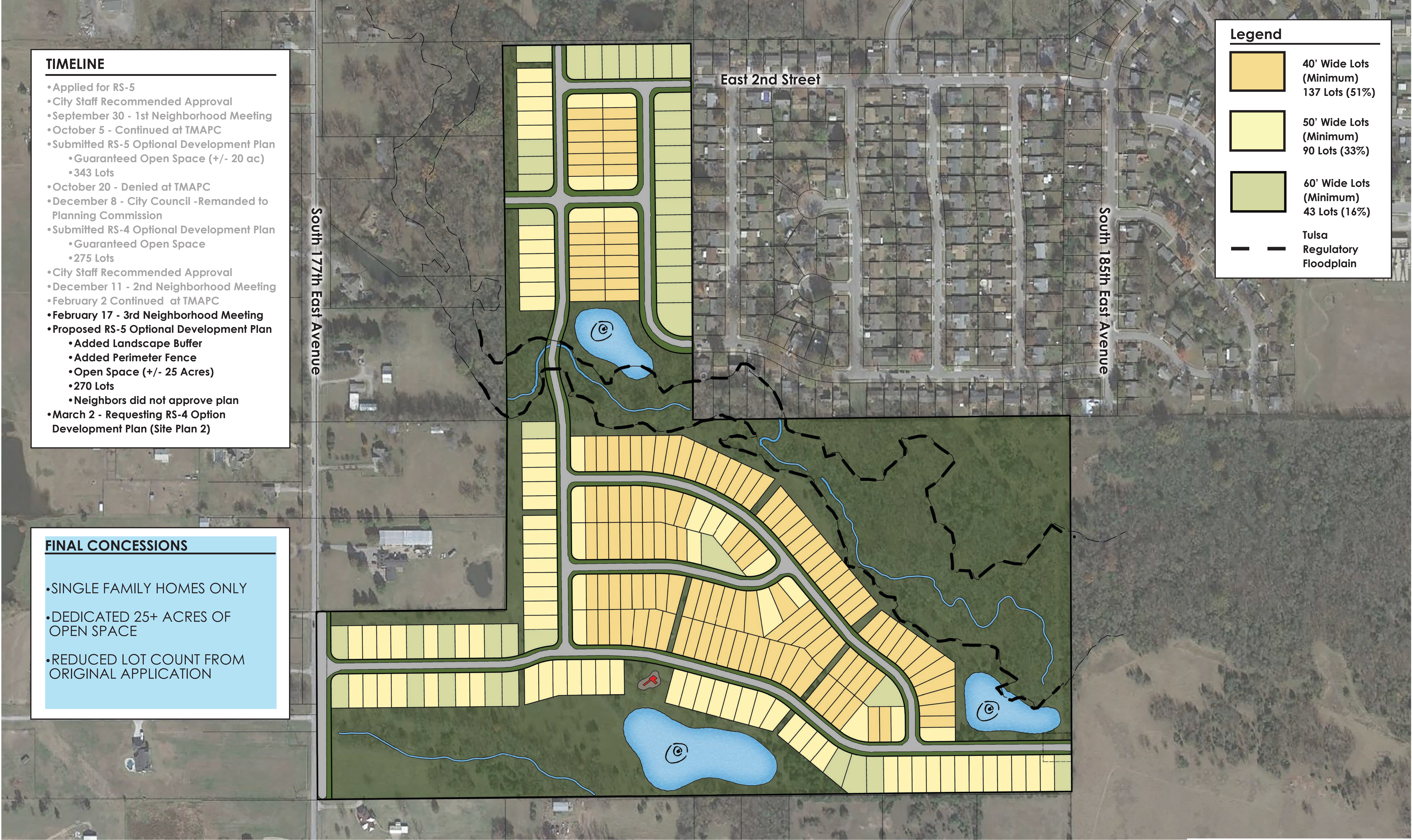
- Applied for RS-5
- City Staff Recommended Approval
- September 30 - 1st Neighborhood Meeting
- October 5 - Continued at TMAPC
- Submitted RS-5 Optional Development Plan
 - Guaranteed Open Space (+/- 20 ac)
 - 343 Lots
- October 20 - Denied at TMAPC
- December 8 - City Council -Remanded to Planning Commission
- Submitted RS-4 Optional Development Plan
 - Guaranteed Open Space
 - 275 Lots
- City Staff Recommended Approval
- December 11 - 2nd Neighborhood Meeting
- February 2 Continued at TMAPC
- February 17 - 3rd Neighborhood Meeting
- Proposed RS-5 Optional Development Plan
 - Added Landscape Buffer
 - Added Perimeter Fence
 - Open Space (+/- 25 Acres)
 - 270 Lots
 - Neighbors did not approve plan
- March 2 - Requesting RS-4 Option Development Plan (Site Plan 2)

FINAL CONCESSIONS

- SINGLE FAMILY HOMES ONLY
- DEDICATED 25+ ACRES OF OPEN SPACE
- REDUCED LOT COUNT FROM ORIGINAL APPLICATION

Legend

-  40' Wide Lots (Minimum)
137 Lots (51%)
-  50' Wide Lots (Minimum)
90 Lots (33%)
-  60' Wide Lots (Minimum)
43 Lots (16%)
-  Tulsa Regulatory Floodplain



Conceptual Masterplan 3

177th East Avenue & Admiral
3/1/22
Project 21150

