

**COMPLIANCE WITH ZONING CODE
LANDSCAPE REQUIREMENTS SECTION 1002**

NET AREA = 214 AC = 21,094 S.F.
 PART 'A' - PLANTINGS AND SPACES FOR REQUIREMENTS
 CALCULATION OF REQUIREMENTS
 ALONG 123RD STREET = 16,000 S.F.
 ALONG 44th STREET = 16,000 S.F.
 TOTAL = 32,000 S.F.
 REQUIRED LANDSCAPE AREA WITH STREETFRONT
 USE 8 ROWS @ 100 S.F. = 800 S.F.
 TOTAL LANDSCAPE AREA PROVIDED WITHIN THE SITE = 16,000 S.F.
 PART 'B' - PARKING AREA REQUIREMENTS
 PART 'C' - TREE REQUIREMENTS
 PART 'D' - TREE REQUIREMENTS
 PART 'E' - TREE REQUIREMENTS
 PART 'F' - TREE REQUIREMENTS
 PART 'G' - TREE REQUIREMENTS
 PART 'H' - TREE REQUIREMENTS
 PART 'I' - TREE REQUIREMENTS
 PART 'J' - TREE REQUIREMENTS
 PART 'K' - TREE REQUIREMENTS
 PART 'L' - TREE REQUIREMENTS
 PART 'M' - TREE REQUIREMENTS
 PART 'N' - TREE REQUIREMENTS
 PART 'O' - TREE REQUIREMENTS
 PART 'P' - TREE REQUIREMENTS
 PART 'Q' - TREE REQUIREMENTS
 PART 'R' - TREE REQUIREMENTS
 PART 'S' - TREE REQUIREMENTS
 PART 'T' - TREE REQUIREMENTS
 PART 'U' - TREE REQUIREMENTS
 PART 'V' - TREE REQUIREMENTS
 PART 'W' - TREE REQUIREMENTS
 PART 'X' - TREE REQUIREMENTS
 PART 'Y' - TREE REQUIREMENTS
 PART 'Z' - TREE REQUIREMENTS

GENERAL NOTES:

1. ALL PLANTINGS AND SPACES SHALL BE PROVIDED OR SCHEDULED FROM NET AREA FROM THE ADJACENT STREET AND SIDEWALK REQUIREMENTS.
2. ALL EXTERIOR LIGHTING SHALL BE PROVIDED OR SCHEDULED AS PER THE CITY OF TALLAHASSEE REQUIREMENTS.
3. ALL LANDSCAPE AREAS SHALL BE MAINTAINED BY AN IN-HOUSE SYSTEM.

Z-5110-SP.2

CERTIFICATION:

I, **DAVID A. JAMES**, A LICENSED ARCHITECT IN THE STATE OF FLORIDA, DO HEREBY CERTIFY THAT THE INFORMATION CONTAINED ON THESE PLANS IS TRUE AND CORRECT AND THAT I AM NOT PROVIDING ANY INFORMATION TO THE CITY OF TALLAHASSEE IN VIOLATION OF SECTION 1002.

DATE: 4-15-1990
 BY: DAVID A. JAMES, ARCHITECT

SCHEDULE OF INSTALLATION:

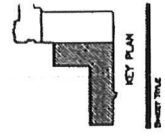
LANDSCAPE MATERIAL	QTY	DATE
PLANTING	16,000 S.F.	AS SHOWN
TREES	800	AS SHOWN
SPACES	32,000 S.F.	AS SHOWN

MCDONALD and Associates, Inc.
 ARCHITECTS AND PLANNERS
 13300 SHELLEY DRIVE
 TALLAHASSEE, FLORIDA 32310
 PHONE: (904) 842-5771
 FAX: (904) 842-5772



PROJECT: 89710, 1998 A, JN

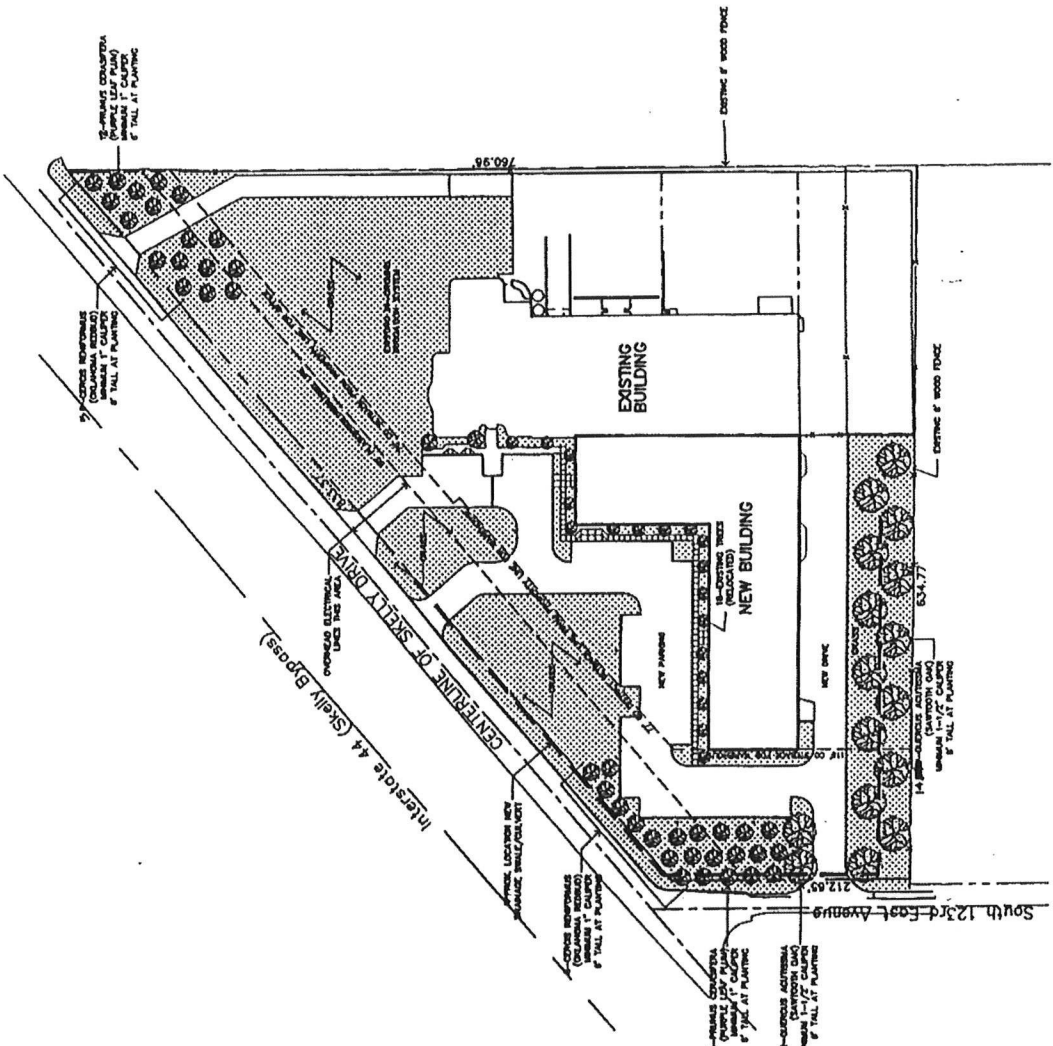
THE ROCKLAND CORPORATION
 13300 SHELLEY DRIVE
 TALLAHASSEE, FLORIDA 32310



LANDSCAPE PLAN

DATE: APRIL 15, 1990
 DRAWN BY: [Name]
 CHECKED BY: [Name]
 PROJECT NUMBER: [Number]

SP1.1



PROPOSED LANDSCAPE PLAN
 RE: A/SP1.0
 NORTH

9.8







