



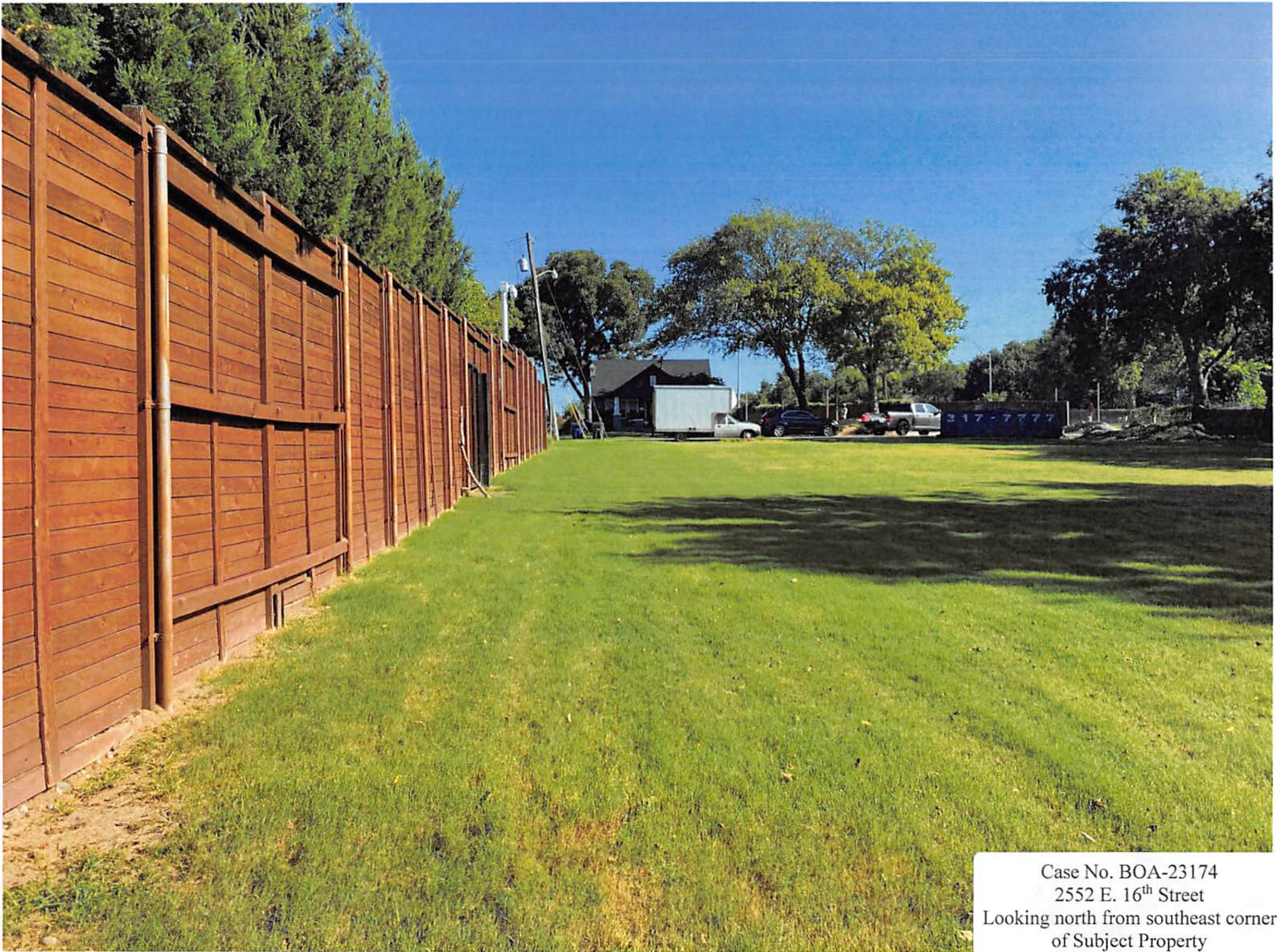
Case No. BOA-23174  
2552 E. 16<sup>th</sup> Street  
Looking west at Subject Property





Case No. BOA-23174  
2552 E. 16<sup>th</sup> Street  
Subject Property facing south





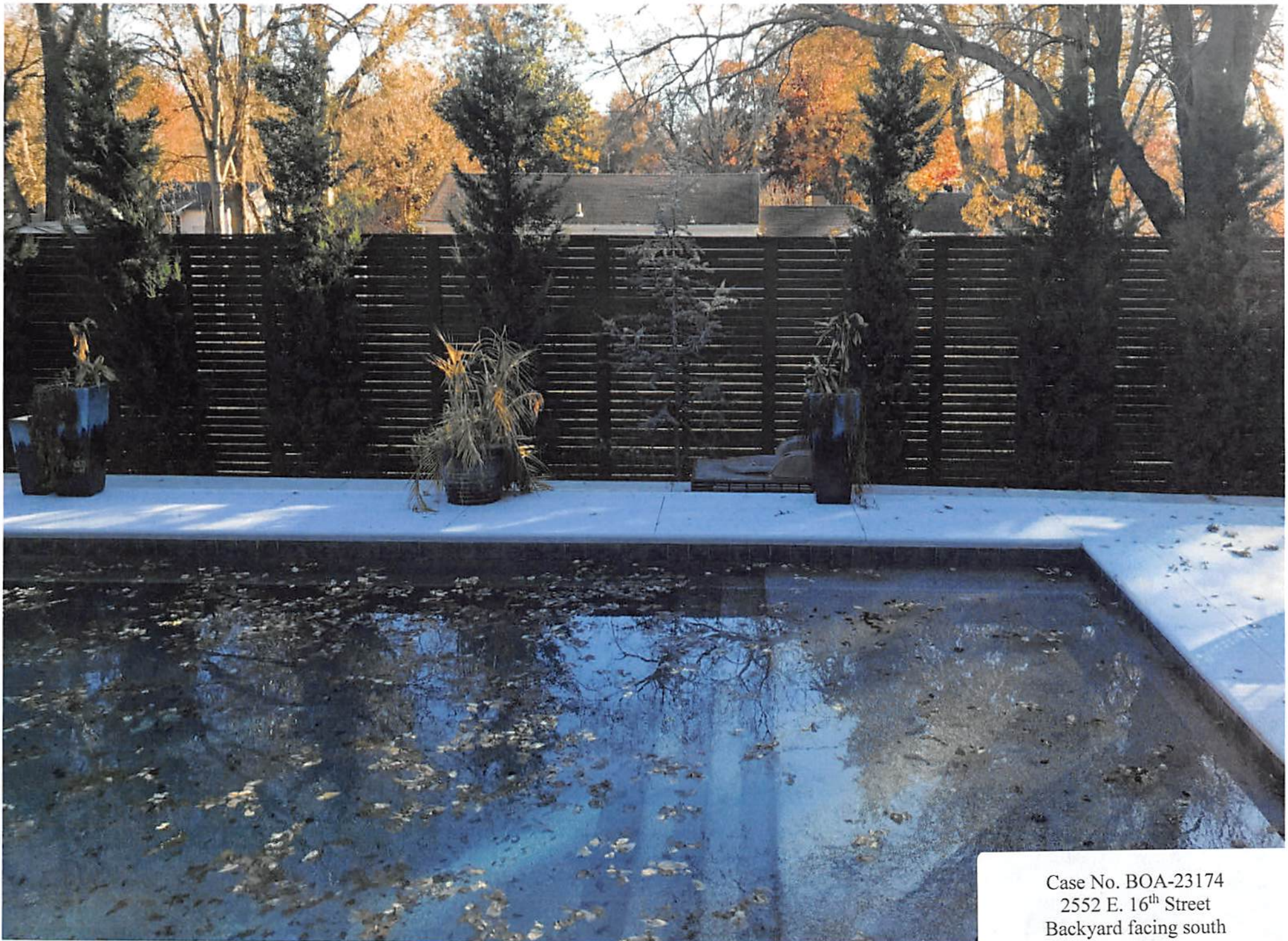
Case No. BOA-23174  
2552 E. 16<sup>th</sup> Street  
Looking north from southeast corner  
of Subject Property





Case No. BOA-23174  
2552 E. 16<sup>th</sup> Street  
View of backyard from adjacent  
property to the south





Case No. BOA-23174  
2552 E. 16<sup>th</sup> Street  
Backyard facing south





Case No. BOA-23174  
2552 E. 16<sup>th</sup> Street  
Backyard facing east





Case No. BOA-23174  
2552 E. 16<sup>th</sup> Street  
Panorama of backyard facing south





Case No. BOA-23174  
2552 E. 16<sup>th</sup> Street  
Subject Property facing BA  
Expressway to the east





Case No. BOA-23174  
2552 E. 16<sup>th</sup> Street  
Facing east on East 16<sup>th</sup> Street